

PRODUCT INFORMATION

Product Name: DynaMarker Protein Eco

Code No: DM610

Lot No: 060309

Size: 300 µl, up to 120 lanes for minigel (1 mm gel thick, 8 × 10 cm mini-gel)

Components: DynaMarker Protein Eco (300 µl), Protein loading dye (1 ml)

Composition of Protein loading dye: 125 mM Tris-HCl (pH 6.8), 200 mM DTT, 4 % SDS, 20 % Glycerol, 0.02 % Bromophenol Blue

DynaMarker Protein Eco

Description: DynaMarker Protein Eco is a molecular-weight standard for Protein SDS-PAGE. DynaMarker Protein Eco does not contain DTT in the storage buffer. Therefore DynaMarker Protein Eco requires to be mixed with the supplied Protein loading dye.

Recommended loading for DynaMarker Protein Eco:

↓ Dilute an aliquot of the Protein loading dye with an equal volume of sterilized water

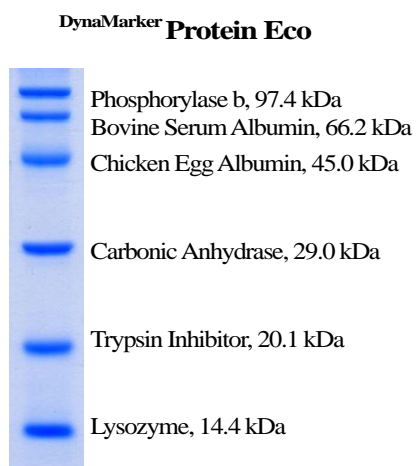
↓ Mix 2.5 µl of DynaMarker Protein Eco and 2.5 µl of above the two-times diluted Protein loading dye

↓ Heat at 100 °C for 5 min

↓ Load to a well

Storage condition: Stable for 12 months at -20 °C, avoid repeated freezing and thawing.

Storage buffer: 62.5 mM Tris-HCl (pH 6.8), 2 % SDS, 10 % Glycerol



DynaMarker Protein Eco (2.5 µl) was run on SDS-PAGE (12 % of polyacrylamide gel), 125V constant voltage about 1.5 hr, stained the gel by “QuickBlue staining solution” of BioDynamics Laboratory Inc. (Code No. DS500)

Protein loading dye

Description: Two-times concentrated loading dye for protein samples.

Recommended loading for protein sample:

↓ Mix 2.5 µl of Protein loading dye and 2.5 µl of a protein sample

↓ Heat at 100 °C for 5 min

↓ Load to a well

Ver. 1.2